



Sweet Harmony

TWO NEW YORK DESIGNERS CREATE SEPARATE SPACES THAT PLAY BEAUTIFULLY SIDE BY SIDE

WRITTEN BY AMY ELBERT

PHOTOGRAPHY BY JOHN BESSLER AND MARCO RICCI

White rift-sawn oak cabinets bleached to the shade of driftwood are a sunny nod to the nearby ocean and vacation setting of the Hampton Designer Showhouse. They also speak volumes to the fresh mix designer Robert Bakes brings to his projects. Rather than install an all-white kitchen (nearly ubiquitous in new homes in the Hamptons), the designer warmed the space with a mix of white-painted and bleached-wood finishes. “When oak is bleached and stained, it takes the heavy orange color out and translates into a softly textured surface, appropriate to the ocean setting,” Bakes ►

Twin Sub-Zero refrigerators with freezer drawers below are concealed behind oak doors. Wine is stored in the island on pullout racks.



1 | Vintage-style Latches

Hefty polished-nickel latches on the oak-paneled refrigerator doors are reminiscent of handles on old-fashioned iceboxes.



2 | Dressy Dots

A marble tile backsplash accented with mirror-like polished nickel rounds catches the light and adds a pretty element to the room.



3 | Linear Veining

White Macaubas quartzite from AKDO covers the island and range backsplash. The stone is stain-resistant like granite but looks like marble.



4 | Mood Lighting

Twin polished-nickel "Gresham Park" fixtures from Hudson Valley provide task lighting and can be dimmed for intimate dining.



5 | Mix of Finishes

Cabinets painted Benjamin Moore white are combined with bleached-wood cabinets for an update on tradition.

6 | Suave Seating

Birch "Constance" stools from Ballard Designs provide comfortable counter seating in a hub-of-the-house kitchen.

says. "And rift oak with its linear grain injects texture and a slightly more modern feel. I like to mix things up."

Textures and colors are repeated throughout the room to create balance and symmetry—signature elements of Bakes's design. Twin refrigerator doors equipped with chunky vintage-inspired latches and freezer drawers below flank a built-in microwave oven and a warming drawer. On the opposite wall is a bowed vent hood that Bakes designed with a bleached oak veneer and polished-nickel bands and rivets. While the range and hood are a visual focal point, they don't dominate the room. "I avoid having one thing that

overwhelms the rest of the design. Everything should flow and balance—there shouldn't be one thing that jumps out and grabs your eye," Bakes explains.

The range is centered on the island, which is topped with a slab of quartzite with strongly linear gray-toned veining. The quartzite is repeated on the range backsplash, where the veining runs vertically. Triangular marble tiles on the countertop backsplash—arranged in a diamond pattern and punctuated with polished nickel dots—add a hint of sparkle and play well with the classic white quartz surfacing on the perimeter counters. "It's nice to have that clean palette that



12 | Metallic Weave
A grass-cloth wallcovering by Phillip Jeffries is highlighted with metallic flecks in the weave, creating a slightly shimmering backdrop.

13 | Fine Art
“Art adds a whole different element to a room—texture, color, and personality,” says designer Patricia Fisher. A graphite and pencil drawing by Christine Hiebert hangs above the mantel.

14 | Game Table
A square two-tiered coffee table provides spaces to store and play games. Painted in a gray lacquer, the table is also durable enough to serve as a footrest.

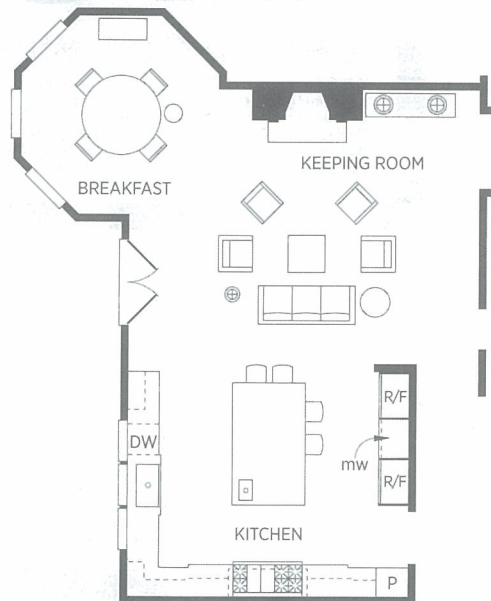
15 | Mirror Image
The geometry of the circular chandelier in the dining area is repeated in the design of the “Orbital” mirror from the Lorin Marsh showroom.



14



15



kitchen. Vintage spool-turned dining chairs encircle the table, which is illuminated by a modernist orb chandelier. “When I first lifted the chandelier out of the box, I sort of gasped,” Fisher says. “It’s big, but it’s so open that it’s perfect there. It really creates a distinctive statement in that room.”

Tall windows are dressed with a gray-striped fabric that “brings a bold element into that space,” the designer says. Combined with sheer cafe curtains, the window treatments cozy the nook and provide a sense of privacy without blocking views or natural light. The mix of furniture styles and vintages continues in the sitting area,

where Fisher partnered mid-20th-century bent-arm chairs with 21st-century tailored settees and a sofa. A custom-made rug in shades of gray and cream that was inspired by a tribal blanket from India grounds the sitting area in comfort.

Tall bookshelves and a two-tiered coffee table ensure there is plenty of space for books and games—always in demand at a vacation home. “This space is for relaxing—for hanging out and dining with friends and family,” Fisher says. ■

See more of the Hampton Designer Showhouse on page 102

For more information, see sources on page 128



7

8

9

7 | Circle Chandelier

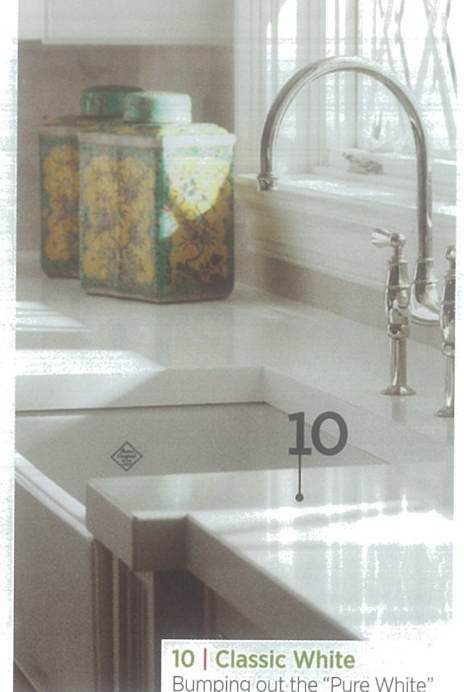
The extra-large “Orb” chandelier from Ballard Designs fills the space above the table, but its open design doesn’t block window views or sunlight.

8 | Soft Sheers

“I love horizontal stripes,” says designer Patricia Fisher, who turned the Pindler & Pindler striped fabric on its side to make curtain panels.

9 | Ceramic Seating

A vacation home requires plenty of flexible seating, and a shapely ceramic stool is easy to move, doubling as an end table when needed.



10

10 | Classic White

Bumping out the “Pure White” Caesarstone countertop on each side of the sink varies counter depth and adds visual interest to the space.



11

11 | Bar Service

A ruffle clamshell bowl cradles limes on a three-tiered bar cart from the Lorin Marsh showroom. The vintage metal lamp is from John Salibello.

brings everything together,” Bakes says. “My concept was to create a kitchen that warmly envelops and gives a feeling of comfort and safeness to those in the space,” he adds. That concept was continued in the adjoining keeping room designed by Patricia Fisher.

“When Bob and I showed each other our palettes, we were pleased to see they were so compatible and harmonious,” Fisher says. Her serene gray-and-cream palette with chartreuse accents blended beautifully with Bakes’s kitchen scheme, and didn’t compete with the house’s fabulous garden and swimming pool views. Bakes was so taken with Fisher’s wallcovering choice—a subtle

metallic-weave grass cloth—that he continued it into one area of the kitchen. In Fisher’s spaces, the wallcovering creates a pretty backdrop for the furnishings, which are more about silhouettes and textures than pattern. “There is some pattern on the rug and window treatments, but I really didn’t want to bog the design down with florals or checks. I wanted each element to pop and have breathing space,” Fisher says.

A window-lined bay was the natural place for a casual dining area, and Fisher chose a table with a sturdy pedestal base and rough-hewn finish that complements the driftwood cabinets in the



KEEPING ROOM
Patricia Fisher

DINING ROOM
Sue Kirby Westrott
and Tina Anastasio

Keeping room With its sumptuous seating and subtle cream-and-gray palette, the keeping room is an ideal spot to spend the weekend. "It's user-friendly, but still sophisticated," says designer Patricia Fisher. Shots of chartreuse hint at the beautiful Hampton views beyond the bay windows. The linen sofa, matching club chairs, tiered coffee table, and silver orb chandelier are by Ballard Designs. See more of this space and the adjoining kitchen by Bob Bakes on page 52.

Pool area Designer Jack Levy intended the corner pool area to be an intimate gathering spot, not used solely for sunbathing. The serene escape is furnished with sectional sofas, a coffee table, and an umbrella from Gloster. A soothing color scheme of blues and wood tones references the water, bluestone, and tree bark. "I think patio and pool areas should be part of the landscape," Levy says. The structural bronze tables remind him of lily pads and insects. Tower-like finials introduce architecture to the flourishing backdrop.



POOL AREA Jack Levy